

# Installing Citrix Receiver

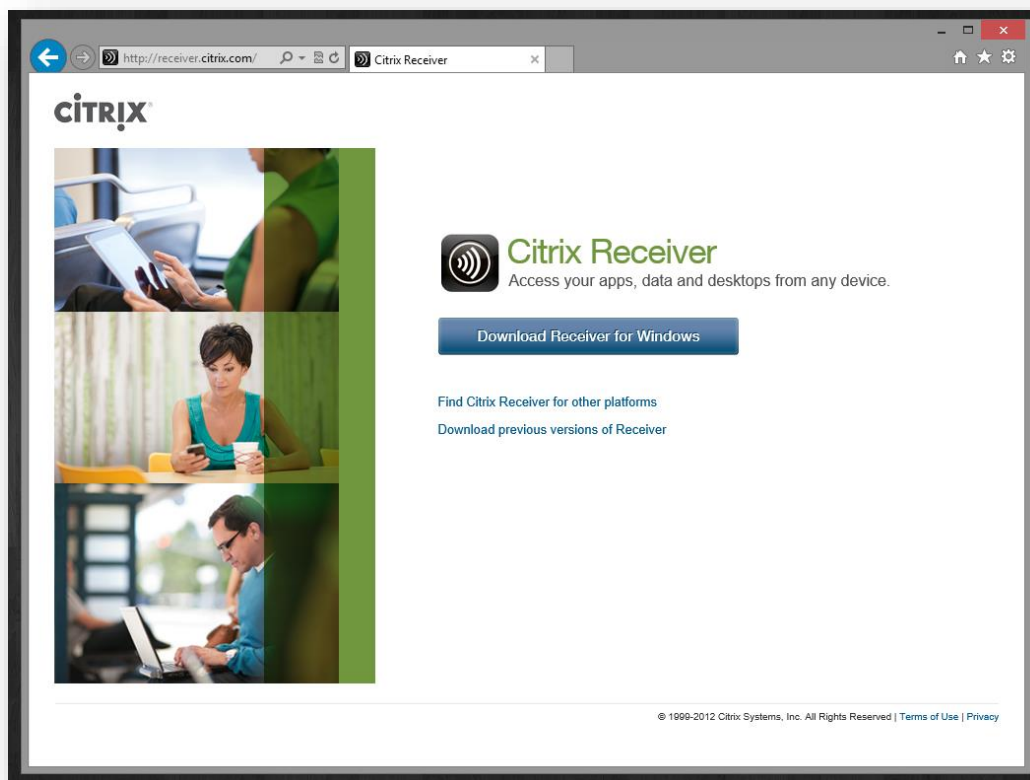
## Windows Instructions

---

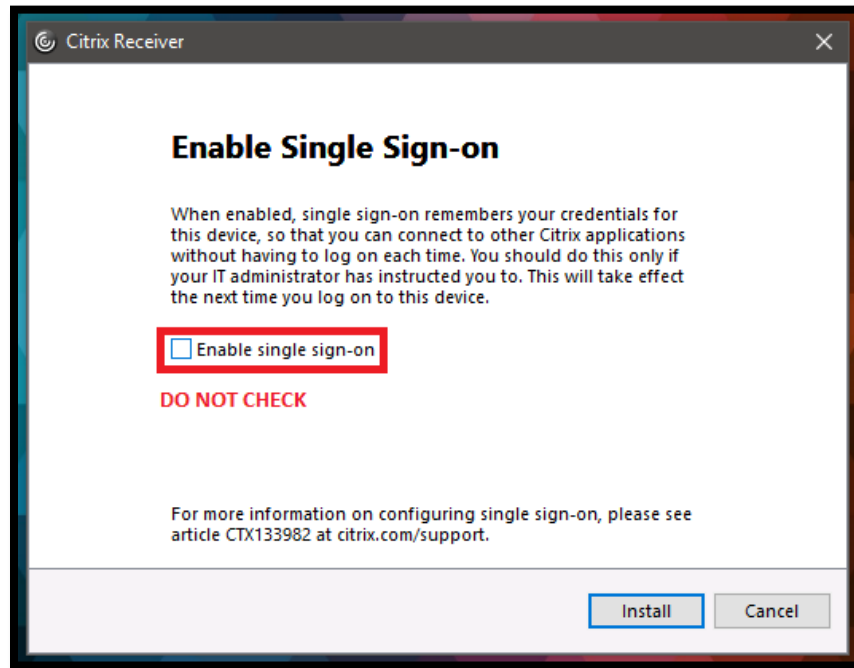
Before you can begin using the software available on the USF Application Gateway, you must first install a program called “Citrix Receiver”.

Open a browser and navigate to <http://receiver.citrix.com>

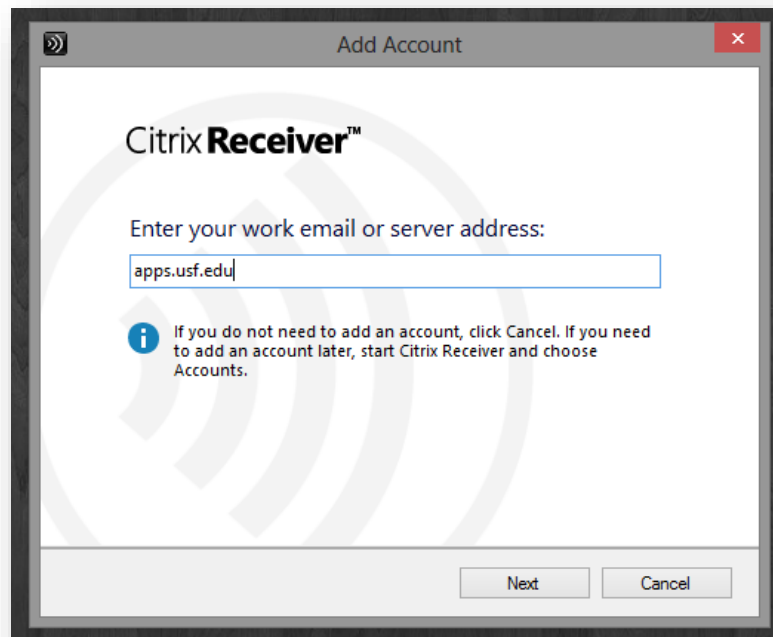
Once there, click the button labeled “Download Receiver for Windows”. When the download is complete, install the Citrix Receiver Application.



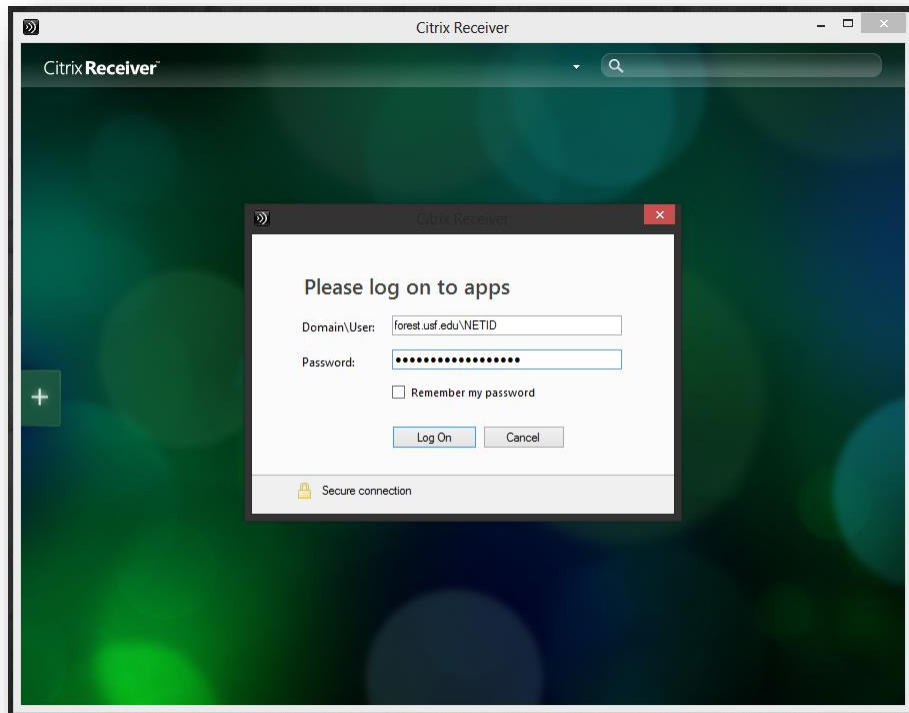
During the installation process, you will be prompted to enable Single Sign-on. Please take caution to ensure this box is **NOT CHECKED**.



Launch the Citrix Receiver program and enter "apps.usf.edu" into the field labeled "work email or server address" and click "Next".



A new window will appear and prompt you for your user credentials. Enter your NETID and password.



You should now be logged in and have access to all of the applications available on the USF Application Gateway.



If you have any questions, please contact the IT Help Desk at (813) 974-1222 or [help@usf.edu](mailto:help@usf.edu).