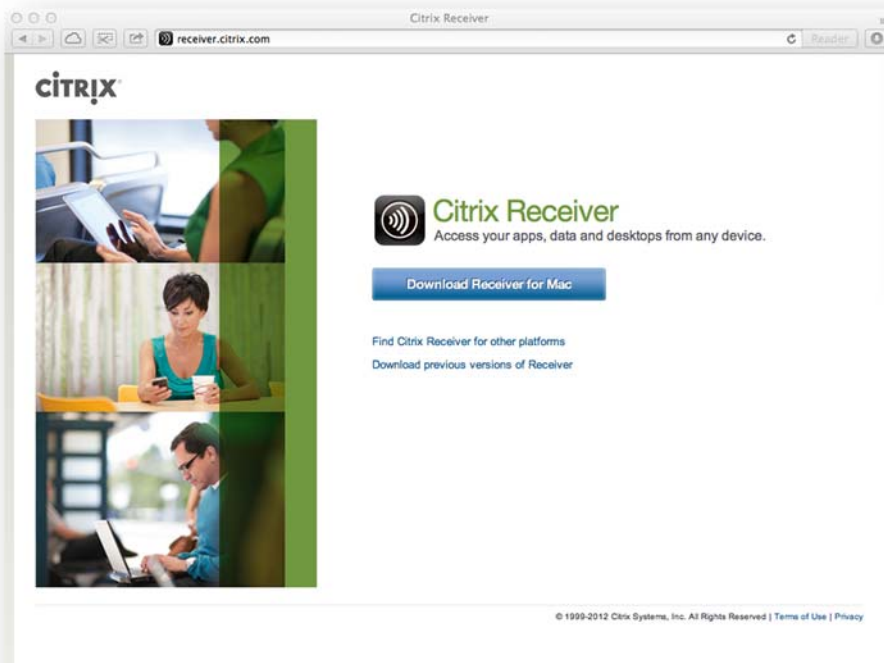


Installing Citrix Receiver

Mac OS X Instructions

Before you can begin using the software available on the USF Application Gateway, you must first install a program called "Citrix Receiver".

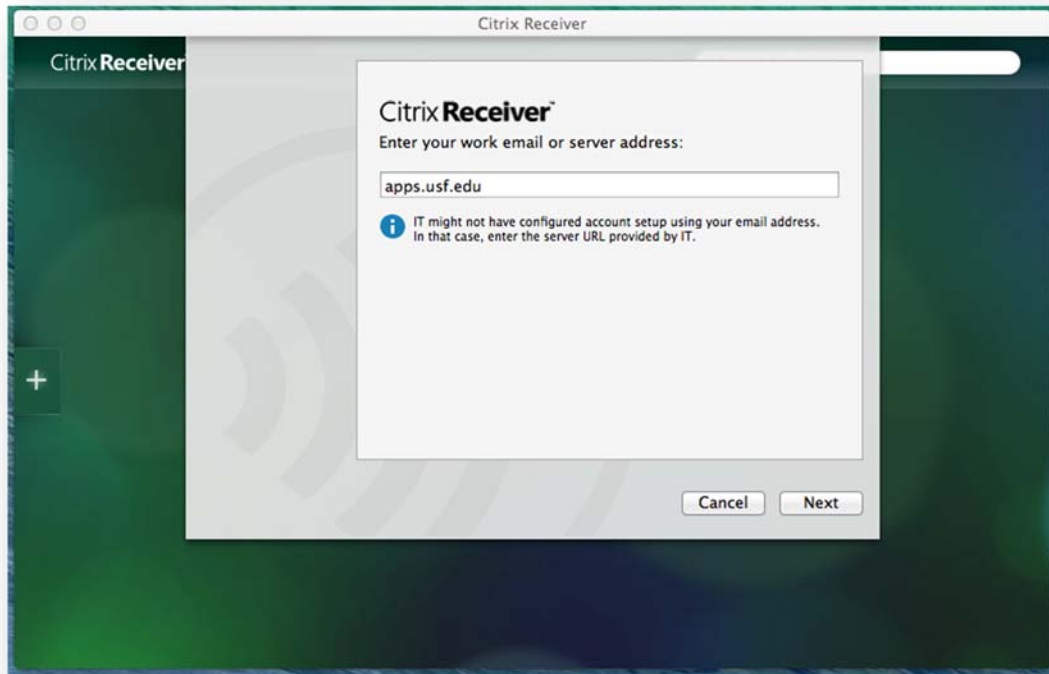
Open a browser and navigate to <http://receiver.citrix.com>



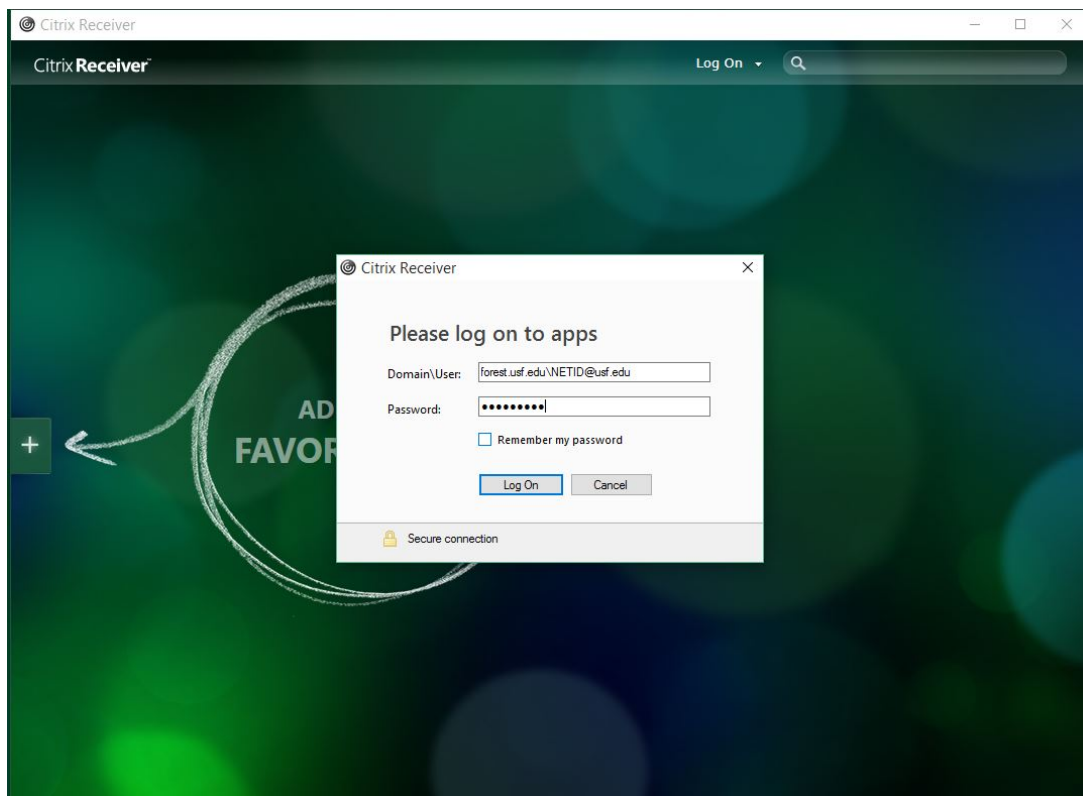
Once there, click the button labeled "Download Receiver for Mac". When the download is complete, install the Citrix Receiver Application.



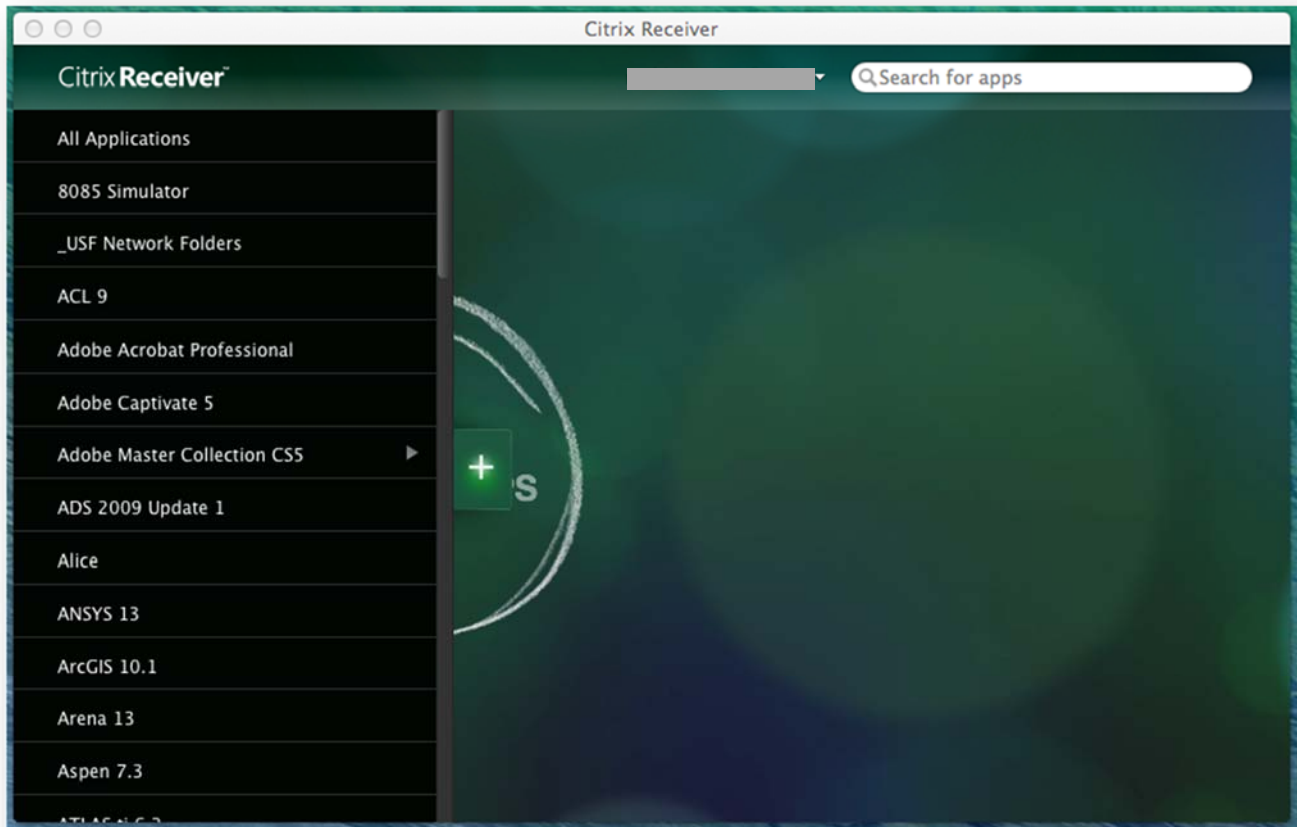
Launch the Citrix Receiver program and enter "apps.usf.edu" into the field labeled "work email or server address" and click "Next".



A new window will appear and prompt you for your user credentials. Enter your email NETID@usf.edu and password. If you encounter any issues, try entering it as forest.usf.edu\NETID@usf.edu.



You should now be logged in and have access to all of the applications available on the USF Application Gateway.



If you have any questions, please contact the IT Help Desk at (813) 974-1222 or help@usf.edu.